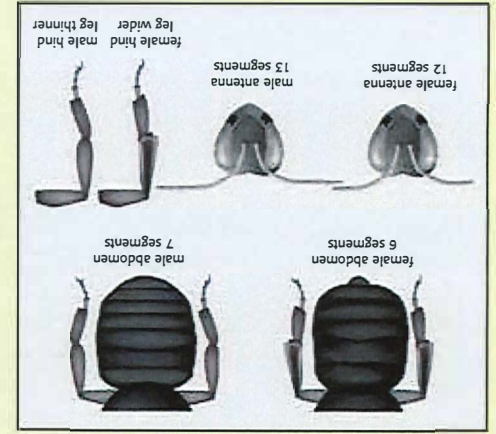


eyes and longer hair.
 antennae and abdomens. Males sometimes have larger
 have pollen baskets (an indentation onto which they
 be common in late summer and early fall. Females
 fall. Workers and queens are both female. Males can
 females are found through spring, summer, and early



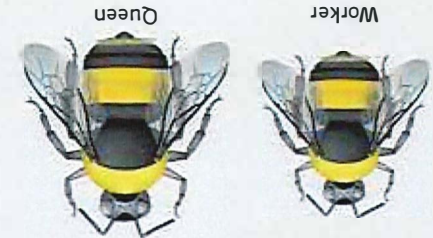
Females have 12 antennal segments versus 7 in males.
 Female hind legs are wider than male hind legs.

Male or female ?

Male coloration is similar to females, except for
 patches of long pale yellow hair on the top of their
 heads and the front of their faces.

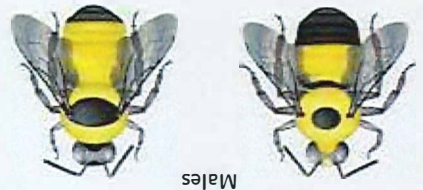


Workers and queens have yellow on the front
 of the thorax as well as on abdominal segments
 two and three. The head and other abdominal
 segments are black with the exception of a fringe
 of brownish yellow hair on the far edge of the
 fifth abdominal segment. Queens are similar to
 workers except they are larger in size. There is
 variation in coloration across its range.

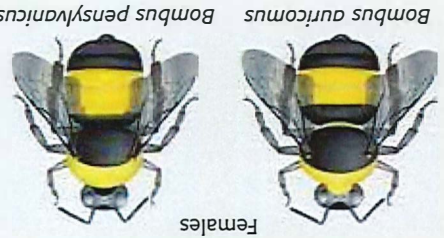


Identifying *Bombus terricola*

Male *B. auricomus* and *B. pensylvanicus* have yellow
 hair along the rear of the thorax while *B. terricola*
 have much larger eyes than *B. terricola* males.



B. auricomus have yellow hair on top of their
 head. *B. pensylvanicus* have yellow at the rear edge
 of their first abdominal segment. *B. auricomus* and
B. pensylvanicus lack the fringe of brown hair on the
 fifth abdominal segment present on *B. terricola*.



Similar bumble bees

Male *B. terricola* have a prominent patch of yellow hair on
 the front of their faces, while *B. pensylvanicus* have mostly
 black hair on the front of their faces. *B. auricomus* males
 have much larger eyes than *B. terricola* males.

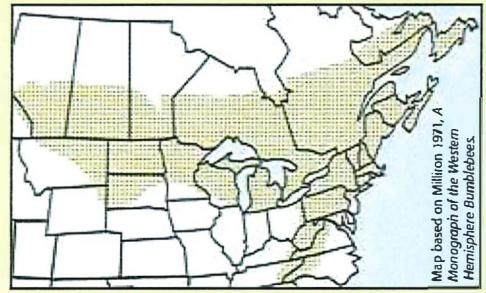


Female *B. terricola* have shorter faces whereas *B. auricomus*
 and *B. pensylvanicus* have long faces.



Heads of similar bumble bees

Historic range of *Bombus terricola*



The yellowbanded bumble bee was once commonly
 found throughout much of eastern North America.
 They can still be found occasionally in isolated
 patches, but *B. terricola* has disappeared from most
 of its former range in recent years. Your efforts to
 search for this bee will help document their current
 range. The Xerces Society and scientists studying
 bumble bee decline will use this information to
 promote conservation of remaining yellowbanded
 bumble bee populations.

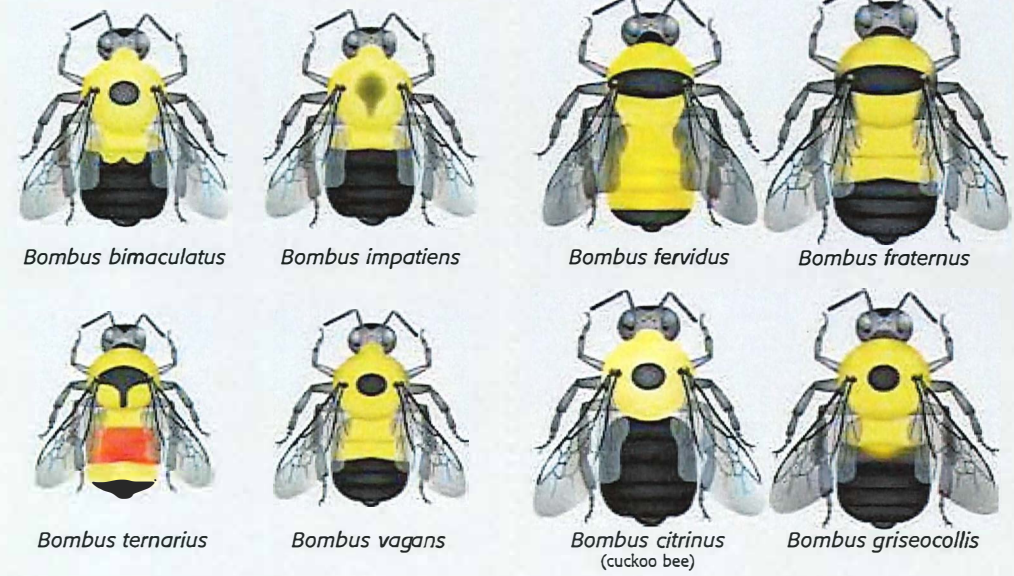
If you find *Bombus terricola*, please contact bumblebees@xerces.org
 Visit www.xerces.org/bumblebees for more information.

Funding for bumble bee conservation provided by the CS Fund.
 Guide developed and illustrated by Elaine Evans, The Xerces Society.
 Thanks to Dr. Robbin Thorp, UC Davis.

Other common bumble bees of eastern North America

There are around 20 bumble bee species present in eastern North America. Females of some
 of the most commonly found bees are pictured here. Some species pictured have varieties
 with different coloration.

For more identification information, visit www.discoverlife.org and www.bugguide.net



**POCKET GUIDE TO IDENTIFYING
 THE YELLOWBANDED
 BUMBLE BEE
 BOMBUS TERRICOLA**



www.xerces.org/bumblebees

**THE XERCES SOCIETY
 FOR INVERTEBRATE CONSERVATION**